

# DM Aktive 2019 - Einzel 40' Hasenheide Berlin



**Oil Pattern Distance:** 40 Feet      **Reverse Brush Drop:** 40 Feet      **Oil Per Board:** 40 uL  
**Forward Oil Total:** 10.92 mL      **Reverse Oil Total:** 12.08 mL      **Volume Oil Total:** 23 mL  
**Forward Boards Crossed:** 273 Boards      **Reverse Boards Crossed:** 302 Boards      **Total Boards Crossed:** 575 Boards

	Start	Stop	Loads	Speed	Crossed	Start	End	Feet	T.Oil
1	2L	2R	3	10	111	0.0	2.8	2.8	4440
2	5L	5R	2	14	62	2.8	6.7	3.9	2480
3	7L	7R	2	18	54	6.7	11.8	5.1	2160
4	8L	8R	1	22	25	11.8	14.9	3.1	1000
5	10L	10R	1	22	21	14.9	18.0	3.1	840
6	2L	2R	0	26	0	18.0	40.0	22.0	0

Forward Reverse More

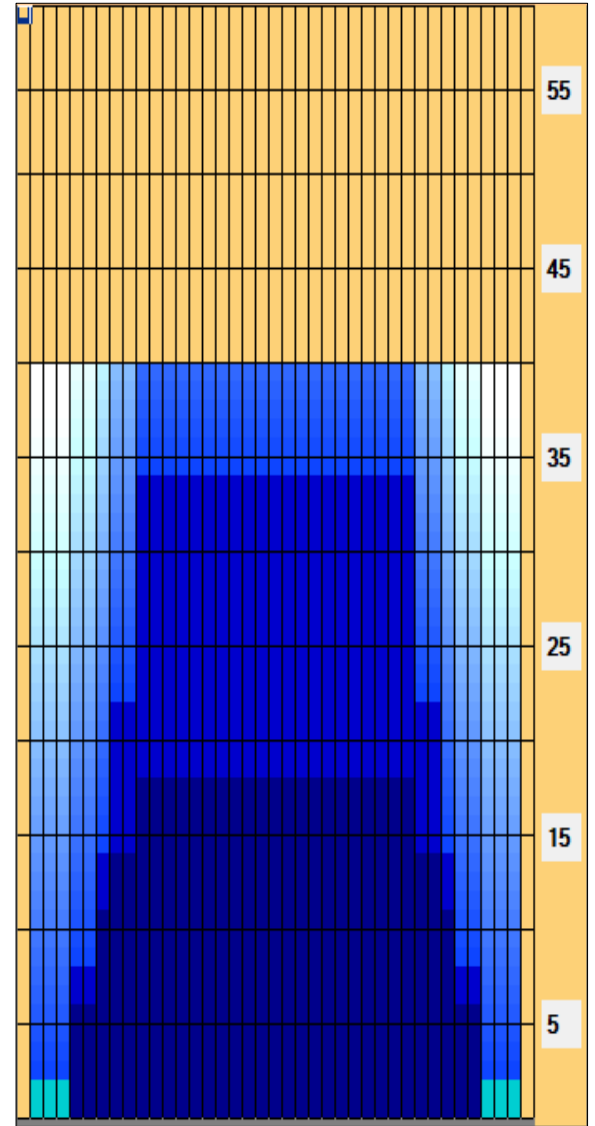
	Start	Stop	Loads	Speed	Crossed	Start	End	Feet	T.Oil
1	2L	2R	0	26	0	40.0	34.0	-6.0	0
2	10L	10R	4	22	84	34.0	21.6	-12.4	3360
3	8L	8R	3	18	75	21.6	14.0	-7.6	3000
4	7L	7R	3	14	81	14.0	8.1	-5.9	3240
5	5L	5R	2	14	62	8.1	4.2	-3.9	2480
6	2L	2R	0	10	0	4.2	0.0	-4.2	0

Forward Reverse More

Conditioner:  
Type In or Select One

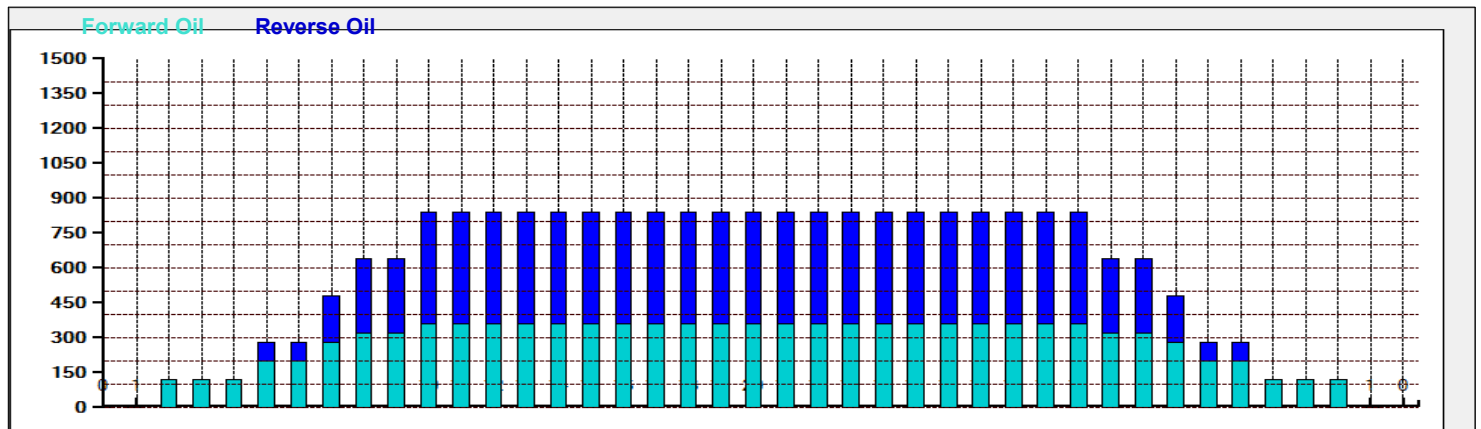
TransferType:  
Type In or Select One

- Forward
- Reverse
- Combined
- Buff



Dieses Oelmuster wurde uploaded von Schlitz #2 In Lane Machine On 16.05.2019 19:30

Item Description	3L-7L:18L-18R Outside Track:Middle	8L-12L:18L-18R Middle Track:Middle	13L-17L:18L-18R Inside Track:Middle	18L-18R:17R-13R Middle: Inside Track	18L-18R:12R-8R Middle:Middle Track	18L-18R:7R-3R Middle:Outside Track
Track Zone Ratio	3.28	1.11	1	1	1.11	3.28



# Neue Upload#2019136193011822



---

<b>Oil Pattern Distance:</b>	<b>40 Feet</b>	<b>Reverse Brush Drop:</b>	<b>40 Feet</b>	<b>Oil Per Board:</b>	<b>40 uL</b>
<b>Forward Oil Total:</b>	<b>10.92 mL</b>	<b>Reverse Oil Total:</b>	<b>12.08 mL</b>	<b>Volume Oil Total:</b>	<b>23 mL</b>
<b>Forward Boards Crossed:</b>	<b>273 Boards</b>	<b>Reverse Boards Crossed:</b>	<b>302 Boards</b>	<b>Total Boards Crossed:</b>	<b>575 Boards</b>

---