

2018 Doppelliga



Oil Pattern Distance: **41 Feet**
 Forward Oil Total: **13.31 mL**
 Forward Boards Crossed: **242 Boards**

Reverse Brush Drop: **42 Feet**
 Reverse Oil Total: **5.775 mL**
 Reverse Boards Crossed: **105 Boards**

Oil Per Board: **55 uL**
 Volume Oil Total: **19.085 mL**
 Total Boards Crossed: **347 Boards**

	Start	Stop	Loads	Speed	Crossed	Start	End	Feet	T.Oil
1	3L	3R	3	14	105	0.0	3.9	3.9	5775
2	9L	9R	1	14	23	3.9	5.8	1.9	1265
3	10L	10R	2	18	42	5.8	10.9	5.1	2310
4	11L	11R	2	18	38	10.9	16.0	5.1	2090
5	12L	12R	2	18	34	16.0	21.1	5.1	1870
6	2L	2R	0	18	0	21.1	34.0	12.9	0
7	2L	2R	0	26	0	34.0	38.0	4.0	0
8	2L	2R	0	30	0	38.0	41.0	3.0	0

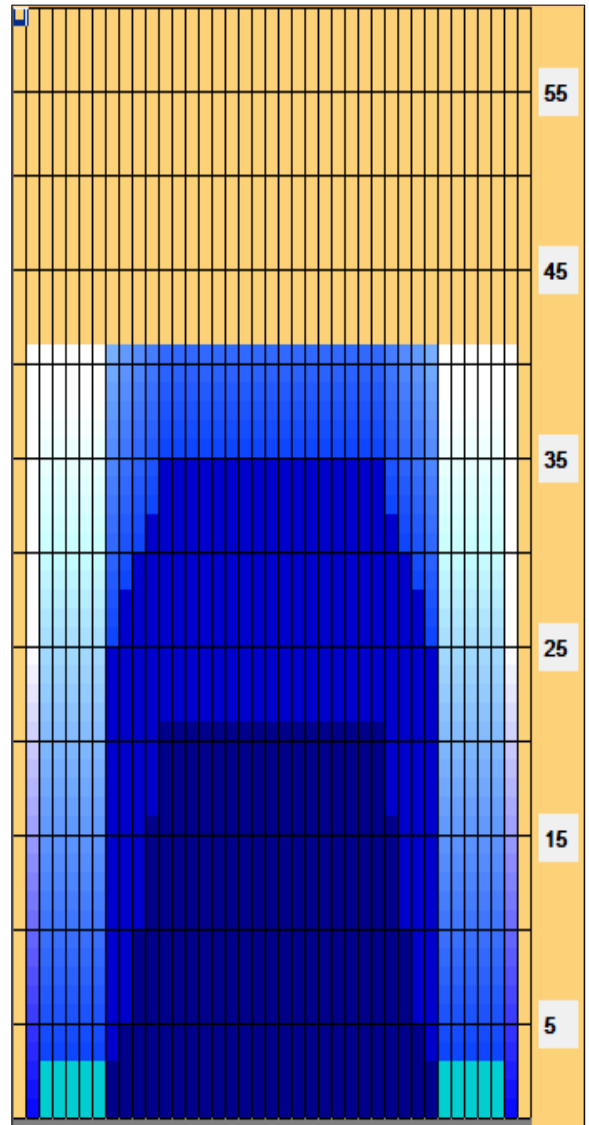
Navigation: Forward Reverse More

	Start	Stop	Loads	Speed	Crossed	Start	End	Feet	T.Oil
1	2L	2R	0	30	0	41.0	35.0	-6.0	0
2	12L	12R	1	18	17	35.0	32.5	-2.5	935
3	11L	11R	1	18	19	32.5	30.0	-2.5	1045
4	10L	10R	1	18	21	30.0	27.5	-2.5	1155
5	9L	9R	1	18	23	27.5	25.0	-2.5	1265
6	8L	8R	1	14	25	25.0	23.1	-1.9	1375
7	2L	2R	0	10	0	23.1	0.0	-23.1	0

Navigation: Forward Reverse More

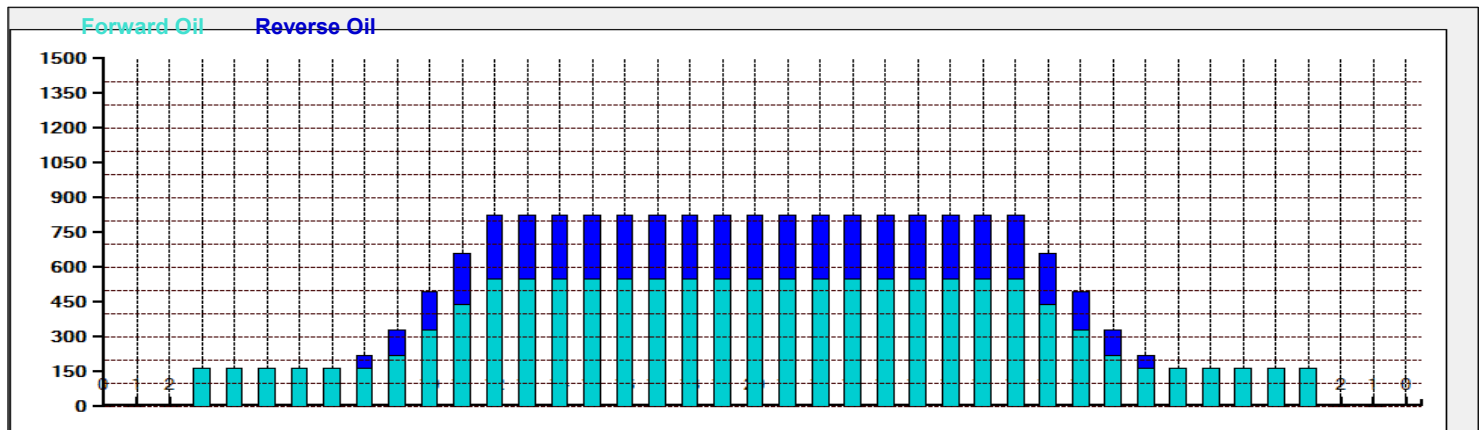
Conditioner:
Type In or Select One
 TransferType:
Type In or Select One

- Forward
- Reverse
- Combined
- Buff



Malta Open Pattern for 2018

Item	3L-7L:18L-18R	8L-12L:18L-18R	13L-17L:18L-18R	18L-18R:17R-13R	18L-18R:12R-8R	18L-18R:7R-3R
Description	Outside Track:Middle	Middle Track:Middle	Inside Track:Middle	Middle: Inside Track	Middle:Middle Track	Middle:Outside Track
Track Zone Ratio	5	1.63	1	1	1.63	5



2018 Doppelliga



Oil Pattern Distance:	41 Feet	Reverse Brush Drop:	42 Feet	Oil Per Board:	55 uL
Forward Oil Total:	13.31 mL	Reverse Oil Total:	5.775 mL	Volume Oil Total:	19.085 mL
Forward Boards Crossed:	242 Boards	Reverse Boards Crossed:	105 Boards	Total Boards Crossed:	347 Boards
