

# Swiss Kader test



<b>Oil Pattern Distance:</b> 41 Feet	<b>Reverse Brush Drop:</b> 31 Feet	<b>Oil Per Board:</b> 45 uL
<b>Forward Oil Total:</b> 14.805 mL	<b>Reverse Oil Total:</b> 8.055 mL	<b>Volume Oil Total:</b> 22.86 mL
<b>Forward Boards Crossed:</b> 329 Boards	<b>Reverse Boards Crossed:</b> 179 Boards	<b>Total Boards Crossed:</b> 508 Boards

	Start	Stop	Loads	Speed	Crossed	Start	End	Feet	T.Oil
1	2L	2R	4	14	148	0.0	5.9	5.9	6660
2	8L	8R	3	14	75	5.9	11.8	5.9	3375
3	10L	10R	2	18	42	11.8	16.9	5.1	1890
4	11L	11R	1	18	19	16.9	19.4	2.5	855
5	12L	12R	1	18	17	19.4	21.9	2.5	765
6	13L	13R	1	22	15	21.9	25.0	3.1	675
7	14L	14R	1	22	13	25.0	28.1	3.1	585
8	2L	2R	0	22	0	28.1	33.0	4.9	0
9	2L	2R	0	22	0	33.0	37.0	4.0	0
10	2L	2R	0	30	0	37.0	41.0	4.0	0

Navigation: Forward Reverse More

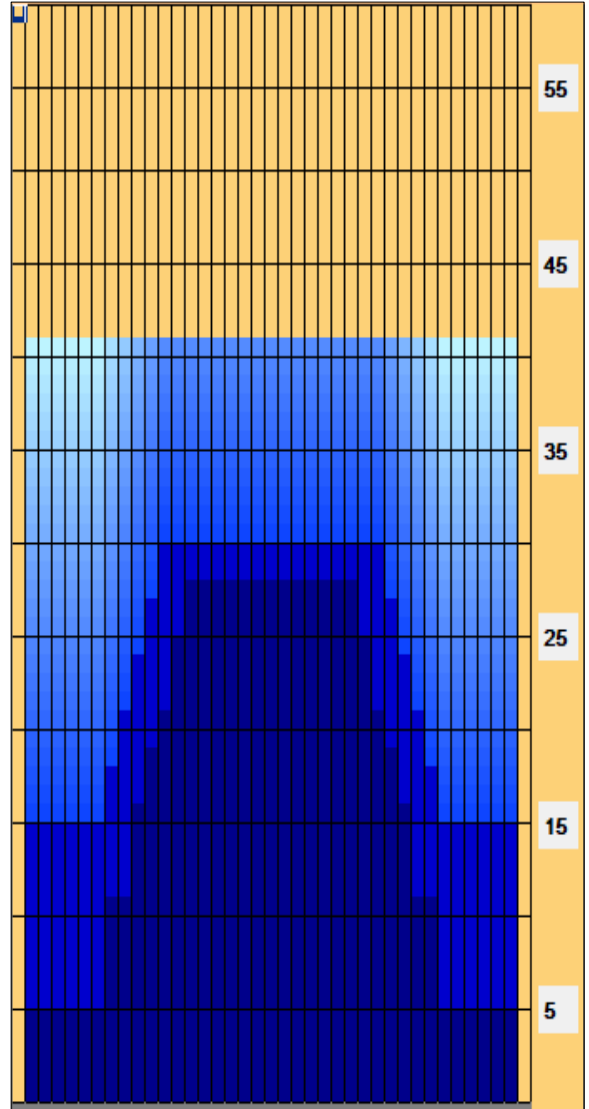
	Start	Stop	Loads	Speed	Crossed	Start	End	Feet	T.Oil
1	2L	2R	0	30	0	41.0	30.0	-11.0	0
2	12L	12R	1	22	17	30.0	26.9	-3.1	765
3	11L	11R	1	22	19	26.9	23.8	-3.1	855
4	10L	10R	1	22	21	23.8	20.7	-3.1	945
5	9L	9R	1	22	23	20.7	17.6	-3.1	1035
6	8L	8R	1	18	25	17.6	15.1	-2.5	1125
7	2L	2R	2	14	74	15.1	11.2	-3.9	3330
8	2L	2R	0	14	0	11.2	0.0	-11.2	0

Navigation: Forward Reverse More

Conditioner:  
Type In or Select One

TransferType:  
Type In or Select One

- Forward
- Reverse
- Combined
- Buff



Item	3L-7L:18L-18R	8L-12L:18L-18R	13L-17L:18L-18R	18L-18R:17R-13R	18L-18R:12R-8R	18L-18R:7R-3R
Description	Outside Track:Middle	Middle Track:Middle	Inside Track:Middle	Middle: Inside Track	Middle:Middle Track	Middle:Outside Track
Track Zone Ratio	3.33	1.45	1.01	1.01	1.45	3.33

